



# MONTHLY MEMBERSHIP PROGRESS REPORT

District 7 N

Results as of: 11/30/2016

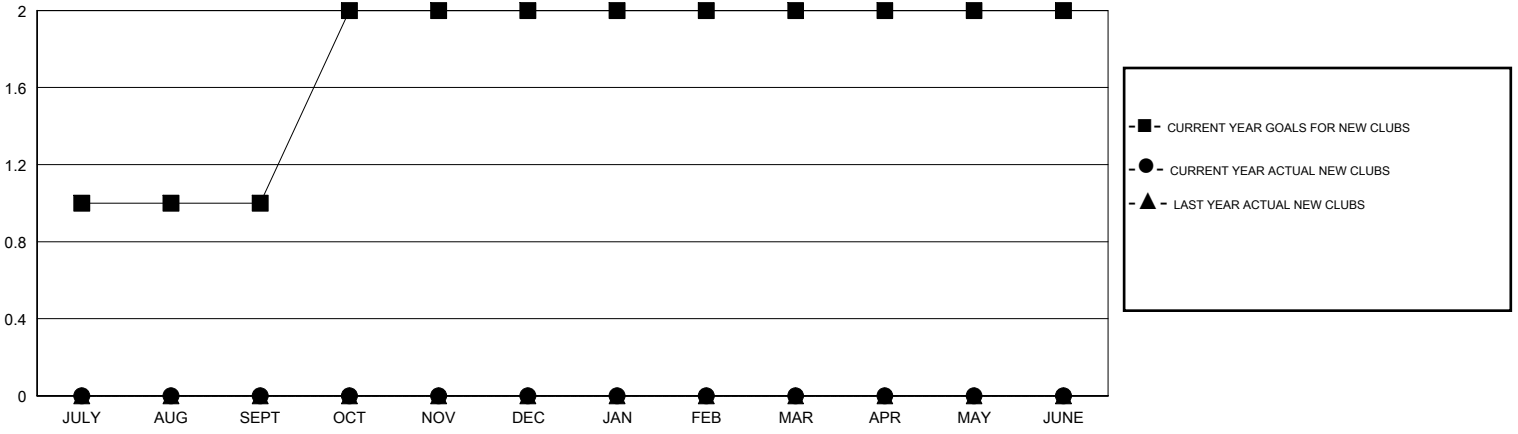
GMT: HAL GRIFFIN

LOCATION ARKANSAS

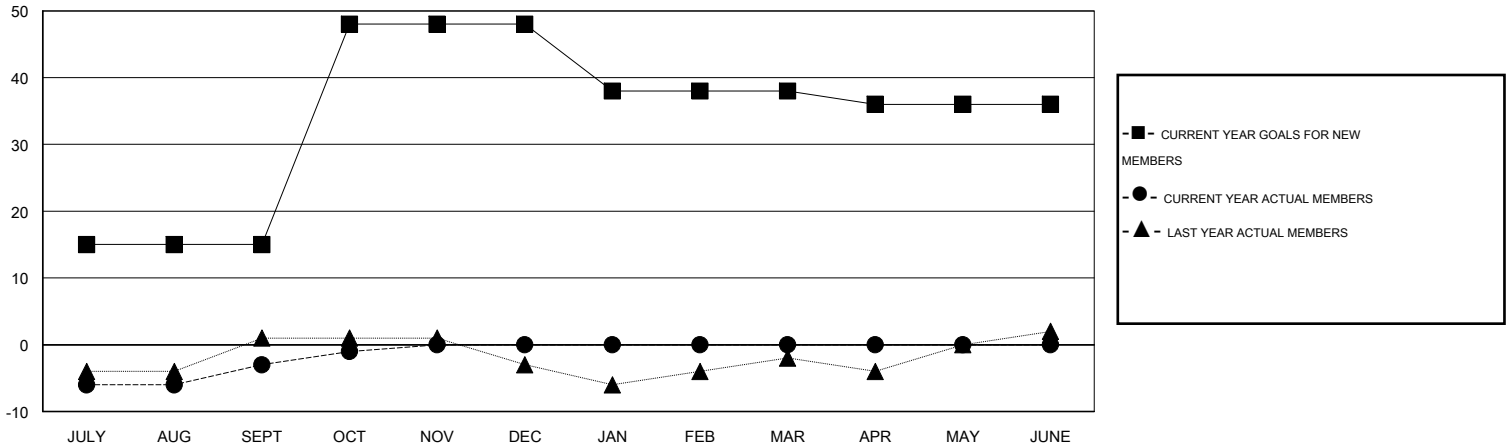
GMT CA 1

Clubs					Members				
RESULTS FOR 2016-2017					RESULTS FOR 2016-2017				
QUARTER	NEW CLUB GOAL	NEW CLUBS	DROPPED CLUBS	NET GAIN/LOSS	QUARTER	NEW MEMBER GOAL	CHARTER AND NEW MEMBERS ADDED	DROPPED MEMBERS	NET GAIN/LOSS
JULY/AUG/SEPT	1	0	0	0	JULY/AUG/SEPT	15	13	16	-3
OCT/NOV/DEC	1	0	0	0	OCT/NOV/DEC	33	6	3	3
JAN/FEB/MAR	0	0	0	0	JAN/FEB/MAR	-10	0	0	0
APR/MAY/JUNE	0	0	0	0	APR/MAY/JUNE	-2	0	0	0

GOALS AND ACTUAL NEW CLUBS CUMULATIVE



GOALS AND ACTUAL MEMBERS CUMULATIVE



DROPPED CLUBS: 0	13 CLUBS OF 34 ADDED 1 OR MORE NEW MEMBERS	<b>GENDER DISTRIBUTION</b>
		MALE 464 (61.78%)
		FEMALE 287 (38.22%)
<b>DROPPED MEMBERS</b>	<a href="#">CLICK HERE FOR HEALTH ASSESSMENT DATA</a>	<b>FAMILY UNIT MEMBERS</b> 153
DECEASED 3		HEAD OF HOUSEHOLD 76
CLUB CANCELLED 0		NON-HEAD OF HOUSEHOLD 77
OTHER 16		
<b>TOTAL</b> 19		